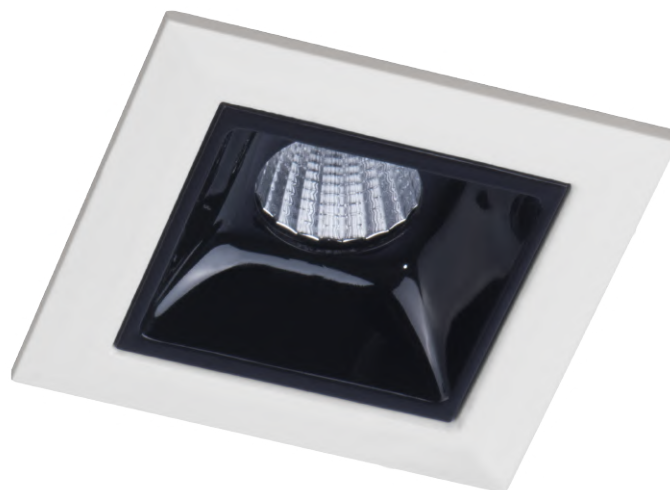


LXD101

SPECIFICATION SHEET



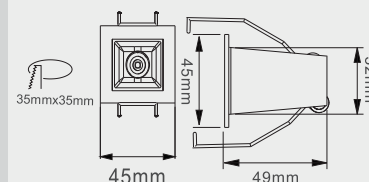
DESCRIPTION

- 2W LED Recessed Linear Downlight
- Material: Aluminum + Iron
- Matt White Trim
- IP20
- Working Temperature (°C): -20 - +32
- 30,000 Hours Lifetime
- LM80 Comply
- LED Chip: Luminus SMD SST-20
- Optic Reflector: Beam Angle °45
- 700ma Current
- Input Voltage & Frequency: 220-240V 50/60Hz
- Non-Dimmable: Rio MINI 700MA/4W 220-240VAC
- Power Factor: 0.4
- Efficiency: 73%
- 3 Year Guarantee

CLASSIFICATION



DIMENSIONS/DRAWING



FINISH

**MATT
WHITE**

CODE	WATTAGE	COLOUR TEMP.	LUMENS	CRI
LXD1013954MW	2W	3000K	171lm	95

Emco House, Units 6-10, Marshgate Drive
Hertford, Hertfordshire, SG13 7JY, UK

Subject to change without prior notice. E & OE.

sales@emcogroup.co.uk Tel: 01992 582033
www.emcogroup.co.uk Fax: 01992 582044

emcogroup
LIMITED

emcolite

emcosafe

emcovent

EMCOLED

FIREBLOK

rio