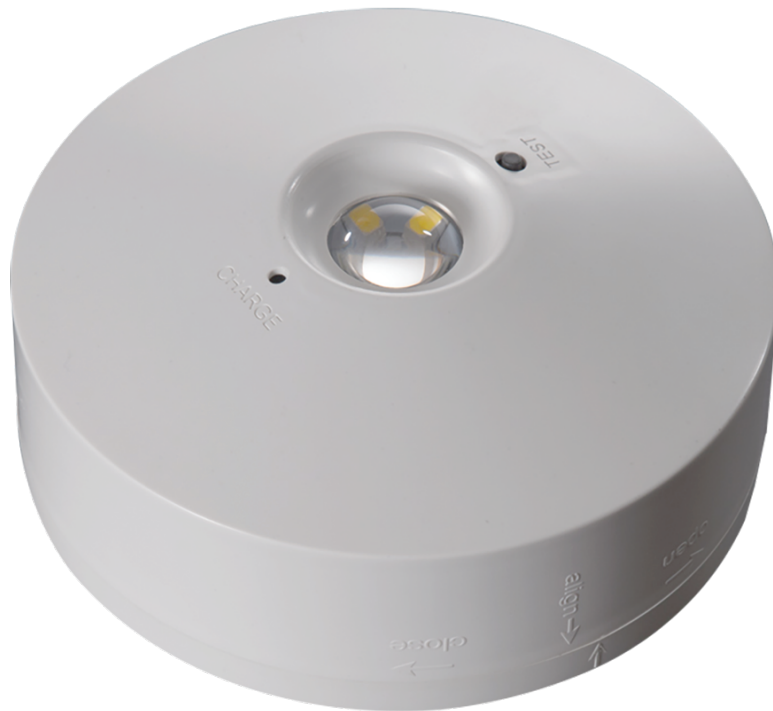


# EMLEDSF3NM

SPECIFICATION SHEET



## DESCRIPTION

- 2.5W IP20 Emergency LED Surface Mounted Downlight
- Maintained / Non-maintained
- Lumen output: 100lm
- Input Voltage: 220-240V
- 3 Hour emergency back-up
- Input Frequency: 50/60Hz
- Working temperature: -10°C to 55°C
- Nickel-Cadmium 3.6V/0.6Ah batteries
- ABS Casing
- Green Charging Indicator
- Test Button
- 5730 SMD LED chips
- 2 Year Guarantee

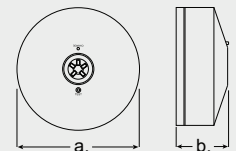
## CLASSIFICATION

CE IP20 RoHS



## DIMENSIONS/DRAWING

(a.) 120mm Diameter  
(b.) 50mm Depth



## FINISH

WHITE

Emco House, Units 6-10, Marshgate Drive  
Hertford, Hertfordshire, SG13 7JY, UK

*Subject to change without prior notice. E & OE.*

sales5@emcogroup.co.uk Tel: 01992 582033  
www.emcogroup.co.uk Fax: 01992 582044

**emcogroup**  
LIMITED

emcolite

emcosafe

emcovent

**EMCOLED**

**FIREBLOK**

**rio**