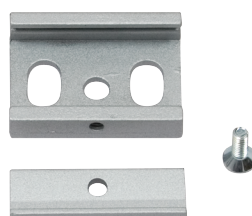


4T9

SPECIFICATION SHEET



DESCRIPTION

- Optional fixing kit for 3 circuit track.
- Suitable for our **4TRA** range of 3 circuit 240V track

CLASSIFICATION

DIMENSIONS/DRAWING

FINISH

MATT
WHITE

SILVER

Emco House, Units 6-10, Marshgate Drive
Hertford, Hertfordshire, SG13 7JY, UK

Subject to change without prior notice. E & OE.

sales5@emcogroup.co.uk Tel: 01992 582033
www.emcogroup.co.uk Fax: 01992 582044

emcogroup
LIMITED

emcolite

emcosafe

emcovent

EMCOLED

FIREBLOK

rio