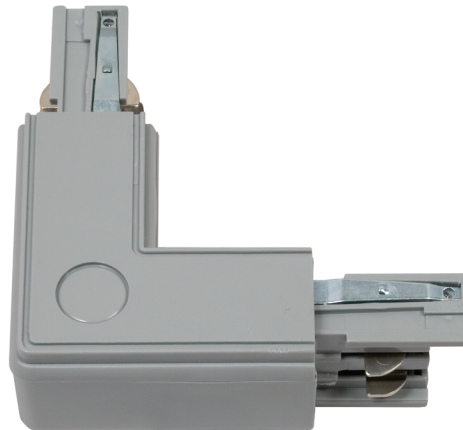


# 4T7L

## SPECIFICATION SHEET



### DESCRIPTION

- L connector for 3 circuit track (Earth outside).
- Suitable for our **4TRA** range of 3 circuit 240V track
- 5 Year Guarantee

### CLASSIFICATION

---

### DIMENSIONS/DRAWING

---

### FINISH

MATT  
BLACK

MATT  
WHITE

SILVER

Emco House, Units 6-10, Marshgate Drive  
Hertford, Hertfordshire, SG13 7JY, UK

*Subject to change without prior notice. E & OE.*

sales5@emcogroup.co.uk  
www.emcogroup.co.uk

Tel: 01992 582033  
Fax: 01992 582044

**emcogroup**  
LIMITED

emcolite

emcosafe

emcovent

**EMCOLED**

**FIREBLOK**

**rio**